

MAITE MORELL



PORTFOLIO
MAITE MORELL

May 2026

MAITE MORELL

Maite Morell is a Spanish artist whose ceramic practice emerges from a lifetime devoted to colour, form and memory. Rooted in her Mediterranean environment and shaped by a solid painterly background, her work transforms everyday objects into vessels of narrative and tactile intimacy. Originating in painting and drawing, her move into ceramics did not represent a departure from colour, but a deepening of it, bringing pigment, line and still life into three dimensions through hand-built clay and an intense engagement with surface.

Her practice is anchored in the tradition of still life, where fruit, flowers, vessels and domestic banquets become protagonists in compositions that speak of memory, ritual and the rhythms of everyday life. Each piece begins with a drawing: a quiet moment of observation from which colour and form are brought into being. These beginnings reflect her conviction that ceramics can function simultaneously as container and content, as a surface where sight and touch remain in dialogue.

Morell works entirely by hand, without moulds or wheel-thrown repetition, valuing the irreproducible gesture embedded in each form. Her technique combines coloured slips and hand painting with intense Mediterranean palettes: warm ochres, deep blues and vibrant greens, recalling light, landscape and the tempered intensity of her surroundings.

Although ceramics now form the core of her practice, her painterly sensitivity remains present, as a continuation of an earlier trajectory that included exhibitions in galleries across Spain. Still life in clay represents, for Morell, the extension of the same poetic inquiry that once occupied her canvases, now expanded into sculptural and tactile form.

Through series such as *Cobalt & Gold*, *El Banquete*, and her explorations of Sicilian plates and Mediterranean flora, her work balances narrative depth with refined material presence. These pieces invite a slow gaze, where each surface becomes a reflection of time, colour and remembered moments. Currently preparing her next solo exhibition scheduled for November - December 2026 in Barcelona, Maite Morell continues to define her voice within contemporary craft. Working independently, she maintains an active studio practice in which process and material remain central to her creative investigation.



SERIES



COBALT & GOLD SERIES



COBALT SERIES



SICILIAN PLATES



PLATE SERIES



STILL LIFE BOWLS



VASES WITH SERIES



STILL LIFE VASES



STILL LIFE PLATES



CATS & SELF-PORTRAITS



COBALT & GOLD SERIES

Cobalt & Gold is a ceramic series in which colour functions as language and material becomes memory. In these works, Maite Morell explores the tension between restraint and luminosity, permanence and vulnerability, using cobalt blue and gold as two opposing yet inseparable forces.

Cobalt, historically associated with depth, protection and continuity, anchors the series in the domestic and the inherited. It recalls Mediterranean tiles, devotional objects and the visual grammar of the home: surfaces shaped by repetition, care and time. In Morell's practice, cobalt acts as a stabilising presence, grounding each form in lived experience.

Gold appears as interruption and elevation. Traditionally linked to the sacred and to that which resists time, gold is not used here as ornament, but as a marker of attention. Applied with restraint, it traces thresholds between interior and exterior, use and contemplation, the everyday and the symbolic. It is not abundance, but intention.

Each piece is built by hand, without moulds or repetition, preserving the trace of the gesture and embracing subtle irregularities. Coloured slips, hand-painted surfaces and layered glazes intensify the tactile quality of the work, while the contained application of gold leaf reinforces the sense of care embedded in the process.

Rooted in still life, the series treats objects as containers of both absence and presence. Memory is not narrated, but held in surface, weight and silence. *Cobalt & Gold* ultimately reflects on value, defined not by excess, but by attention, inviting a slow and sustained encounter.



COBALT & GOLD SERIES

VASE WITH SELF-PORTRAIT, CATS AND FISHBOWL

A self-portrait in cobalt and gold.
Cats, water, and a small suspended world.
A quiet scene between watching and being watched.

Low-temperature clay pieces are made with the ancient technique of rolling, which allows unique works to be built with free lines. Hand-painted with slip, finished with shiny glaze on the interior and exterior. Lid of the piece finished with gold leaf.

Weight: 4.0 kg
Dimensions: 35 x 41 cm
Diameter: 41 cm

1.600€



COBALT & GOLD SERIES

VASE WITH SELF-PORTRAIT, CATS AND FLOWERS

A quiet presence, held in stillness.
Between gaze, colour and closeness.
And something that remains unspoken.

Low-temperature clay pieces are made with the ancient technique of rolling, which allows unique works to be built with free lines. Hand-painted with slip, finished with shiny glaze on the interior and exterior. Lid of the piece finished with gold leaf.

Weight: 4.2 kg
Dimensions: 48 x 25 cm
Diameter: 25 cm

1.600€



COBALT & GOLD SERIES

VASE WITH SELF-PORTRAIT, CATS AND TAROT CARDS

A self-portrait in cobalt and gold.
Cats, cards, and quiet signs.
A small scene held between gaze and mystery.

Low-temperature clay pieces are made with the ancient technique of rolling, which allows unique works to be built with free lines. Hand-painted with slip, finished with shiny glaze on the interior and exterior. Lid of the piece finished with gold leaf.

Weight: 4.2 kg
Dimensions: 42 x 35 cm
Diameter: 35 cm

1.600€



COBALT & GOLD SERIES

VASE WITH GARDENIAS

Hand-built low-temperature ceramic, formed through coiling, hand-painted with slip, finished with glossy glaze inside and out, and detailed with gold leaf.

Weight: 2.6 kg

Dimensions: 45 x 30 cm

Diameter: 30 cm

KEPT BY THE ARTIST



COBALT & GOLD SERIES

VASE WITH DAHLIAS

Hand-built low-temperature ceramic, formed through coiling, hand-painted with slip, finished with glossy glaze inside and out, and detailed with gold leaf.

Weight: 2.6 kg

Dimensions: 46 x 20 cm

Diameter: 20 cm

1.100€



COBALT & GOLD SERIES

VASE WITH CAMELLIAS

Hand-built low-temperature ceramic, formed through coiling, hand-painted with slip, finished with glossy glaze inside and out, and detailed with gold leaf.

Weight: 2.6 kg

Dimensions: 42 x 29 cm

Diameter: 29 cm

1.100€



COBALT SERIE

The *Cobalt Series* is a prolonged exploration of form, gesture and continuity, articulated through a single chromatic language: cobalt blue on white ceramic ground. Across fourteen unique pieces, Maite Morell approaches repetition not as limitation, but as a method of growth, a practice of sustained observation, rhythm and evolution.

Here, cobalt functions as both structure and movement. Historically associated with protection, clarity and permanence, it anchors the series in tradition, while its fluid application introduces variation, breath and time. Painted motifs of dahlias, pears, lilies and other floral forms emerge through a loose, organic gesture that avoids rigidity and allows the trace of the hand to remain visible.

The white base does not operate as a neutral background, but as a space of pause and silence, an open field against which blue can unfold. Within this contrast, motifs oscillate between figuration and abstraction, between recognition and pattern. Geometric details appear as moments of order within movement, small visual anchors that balance the composition without arresting it.

The series understands the vase as a living form, in constant transformation. Each piece explores different proportions, openings, curves and weights, treating the vessel not as a fixed archetype, but as a body that adjusts, learns and shifts. Repetition becomes a reflective exercise: each object carries the memory of the previous one, while advancing through subtle differences.

Rooted in the tradition of still life, the *Cobalt Series* does not describe a scene, but sustains a state. Growth is expressed not through accumulation, but through variation. What emerges is a quiet choreography between gesture and surface, discipline and freedom, where tradition is not preserved intact, but activated through making.

The series remains open. Its continuity signals an ongoing dialogue between hand and material, in which reflection becomes movement, and movement becomes form.



COBALT SERIES

OVAL VASE WITH CHINESE FLOWERS

Low-temperature clay pieces are made with the ancient technique of rolling, which allows unique works to be built with free lines. Hand-painted with slip with shiny glaze on the interior and exterior.

Weight: 0.6 kg

Dimensions: 20 x 19 cm

Diameter: 19 cm

450 €



COBALT SERIES

VASE WITH POMEGRANATES

Low-temperature clay pieces are made with the ancient technique of rolling, which allows unique works to be built with free lines. Hand-painted with slip with shiny glaze on the interior and exterior.

Weight: 0.6 kg

Dimensions: 20 x 19 cm

Diameter: 19 cm

SOLD. PRIVATE COLLECTOR



COBALT SERIES

VASE WITH DAHLIAS

Low-temperature clay pieces are made with the ancient technique of rolling, which allows unique works to be built with free lines. Hand-painted with slip with shiny glaze on the interior and exterior.

Weight: 0.8 kg
Dimensions: 18 x 19 cm
Diameter: 19 cm

450 €



COBALT SERIES

VASE WITH PEARS

Low-temperature clay pieces are made with the ancient technique of rolling, which allows unique works to be built with free lines. Hand-painted with slip with shiny glaze on the interior and exterior.

Weight: 0.6 kg
Dimensions: 18 x 15 cm
Diameter: 15 cm

450 €



COBALT SERIES

VASE WITH LARGE PEARS

Low-temperature clay pieces are made with the ancient technique of rolling, which allows unique works to be built with free lines. Hand-painted with slip with shiny glaze on the interior and exterior.

Weight: 0.6 kg

Dimensions: 23 x 13 cm

Diameter: 13 cm

SOLD. PRIVATE COLLECTOR.



COBALT SERIES

VASE WITH HOLLYHOCKS

Low-temperature clay pieces are made with the ancient technique of rolling, which allows unique works to be built with free lines. Hand-painted with slip with shiny glaze on the interior and exterior.

Weight: 0.6 kg
Dimensions: 24 x 17 cm
Diameter: 17 cm

450 €



COBALT SERIES

VASE WITH LOVE FLOWERS

Low-temperature clay pieces are made with the ancient technique of rolling, which allows unique works to be built with free lines. Hand-painted with slip with shiny glaze on the interior and exterior.

Weight: 0.6 kg
Dimensions: 22 x 17 cm
Diameter: 17 cm

450 €



COBALT SERIES

VASE WITH BLUE LILIES

Low-temperature clay pieces are made with the ancient technique of rolling, which allows unique works to be built with free lines. Hand-painted with slip with shiny glaze on the interior and exterior.

Weight: 0.7 kg
Dimensions: 21 x 16 cm
Diameter: 16 cm

450 €



COBALT SERIES

VASE WITH BLUE GRAPES

Low-temperature clay pieces are made with the ancient technique of rolling, which allows unique works to be built with free lines. Hand-painted with slip with shiny glaze on the interior and exterior.

Weight: 0.7 kg
Dimensions: 19 x 18 cm
Diameter: 18 cm

SOLD. PRIVATE COLLECTOR.



COBALT SERIES

VASE WITH LITTLE FLOWERS

Low-temperature clay pieces are made with the ancient technique of rolling, which allows unique works to be built with free lines. Hand-painted with slip with shiny glaze on the interior and exterior.

Weight: 0.6 kg
Dimensions: 23 x 15 cm
Diameter: 15 cm

SOLD. PRIVATE COLLECTOR.



COBALT SERIES

LARGE VASE WITH SMALL FLOWERS

Low-temperature clay pieces are made with the ancient technique of rolling, which allows unique works to be built with free lines. Hand-painted with slip with shiny glaze on the interior and exterior.

Weight: 2.1 kg

Dimensions: 30 x 30 cm

Diameter: 30 cm

KEPT BY THE ARTIST



COBALT SERIES

VASE WITH FLOWERS OF PARADISE

Low-temperature clay pieces are made with the ancient technique of rolling, which allows unique works to be built with free lines. Hand-painted with slip with shiny glaze on the interior and exterior.

Weight: 2.3 kg

Dimensions: 30 x 30 cm

Diameter: 30 cm

800 €



COBALT SERIES

OVAL VASE WITH FLOWERS

Low-temperature clay pieces are made with the ancient technique of rolling, which allows unique works to be built with free lines. Hand-painted with slip with shiny glaze on the interior and exterior.

Weight: 2.3 kg

Dimensions: 28 x 30 cm

Diameter: 30 cm

800 €



COBALT SERIES

VASE OF PEARS AND FLOWERS

Low-temperature clay pieces are made with the ancient technique of rolling, which allows unique works to be built with free lines. Hand-painted with slip with shiny glaze on the interior and exterior.

Weight: 1.7 kg

Dimensions: 23 x 34 cm

Diameter: 34 cm

800 €



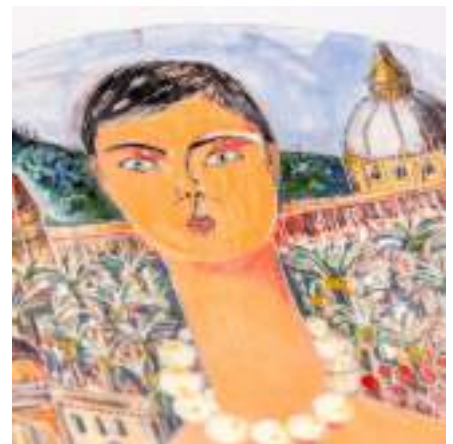
SICILIAN PLATES

The *Sicilian Plates* series was born from Maite Morell's journey through Sicily in the autumn of 2025. Experienced as a moment of recognition and affinity, the journey wove together landscape, history and everyday life through shared Mediterranean roots. More than a destination, Sicily appears here as an accumulated experience, a sequence of gestures, observations and details gathered with attention and translated into material form. Sicily holds a long tradition of painted plates, spanning popular ceramics and historic maiolica, where the plate has functioned for centuries as a narrative, decorative and symbolic surface. Morell engages with this legacy from a contemporary position, moving away from ornamentation and using the circular format as a field for pictorial and personal exploration. The series currently consists of four pieces, originally conceived as a group of five, and operates as a material travel notebook. Each plate functions as a note, a postcard, a fragment of memory fixed on the surface. Markets, architecture, landscapes, textures and everyday rhythms are not depicted literally, but filtered through gesture, colour and composition.

Treated as paintings, the plates are released from their utilitarian role and become narrative supports. The circular format concentrates the gaze and intensifies the gesture. Colour, contrast and movement construct open scenes, where lived experience is translated into signs rather than closed images.

Each piece functions as an indirect self-portrait. Not a depiction of the artist, but a record of how she inhabited the place: how she looked, what she retained, what she chose to fix. The marks of travel are not only geographical, but emotional and temporal, traces of an embodied experience where landscape becomes gaze, and gaze becomes form.

Rather than monumentalising the journey, the series preserves its fragility. The plates do not close a narrative; they sustain it, like an open diary in which each piece holds the memory of an instant and the possibility of return.



SICILIAN PLATES

SELF-PORTRAIT IN PALERMO

A final image from Sicily.
A self-portrait shaped by place, memory and return.
And a page from an open diary, held on a plate.

Low-temperature clay pieces are made with the ancient technique of rolling, which allows unique works to be built with free lines. Hand-painted with slip. Finished with shiny glaze on the interior and exterior.

Weight: 2.5 kg
Dimensions: 45 x 10 cm
Diameter: 45 cm

1.100 €



SICILIAN PLATES

SELF-PORTRAIT AND LEOPARD IN RAGUSA

Low-temperature clay pieces are made with the ancient technique of rolling, which allows unique works to be built with free lines. Hand-painted with slip. Finished with shiny glaze on the interior and exterior.

Weight: 2.7 kg

Dimensions: 45 x 10 cm

Diameter: 45 cm

KEPT BY THE ARTIST



SICILIAN PLATES

SELF-PORTRAIT IN THE VALLEY OF THE TEMPLES

Low-temperature clay pieces are made with the ancient technique of rolling, which allows unique works to be built with free lines. Hand-painted with slip. Finished with shiny glaze on the interior and exterior.

Weight: 2.7 kg

Dimensions: 45 x 10 cm

Diameter: 45 cm

1.100 €



SICILIAN PLATES

SELF-PORTRAIT AND FISH WITH PARSLEY IN ORTIGIA

Low-temperature clay pieces are made with the ancient technique of rolling, which allows unique works to be built with free lines. Hand-painted with slip. Finished with shiny glaze on the interior and exterior.

Weight: 2.7 kg

Dimensions: 45 x 10 cm

Diameter: 45 cm

1.100 €



SICILIAN PLATES

SELF-PORTRAIT IN THE ROMAN THEATER OF TAORMINA

Low-temperature clay pieces are made with the ancient technique of rolling, which allows unique works to be built with free lines. Hand-painted with slip. Finished with shiny glaze on the interior and exterior.

Weight: 2.7 kg

Dimensions: 45 x 10 cm

Diameter: 45 cm

1.100 €



PLATE SERIES

The *Plates Series* brings together seven ceramic works that move between self-portrait and still life, not as opposing genres, but as two ways of approaching the same question. Throughout the series, the plate functions as a surface of reflection, a space where interior and exterior brush against one another without settling.

In some pieces, the gaze turns inward. The self-portraits with black cat, with white cat, with cat, in blue, do not seek a stable image of the self, but suggest states, shifts, presences. The cats appear as open figures: silent companions, witnesses, alter egos. Not fixed symbols, but forms that allow identity to remain multiple and in motion.

Other pieces turn outward. Still lifes of anemones in a blue vase, apples and pears, pomegranates and apples, reference domestic space and pictorial tradition through restraint. They may function as pauses within the series, or as another mode of self-portrait, where objects stand in for the body.

Between these works, a play of reflections emerges. What appears as a figure in one plate returns as an object in another, suggesting that identity may be shaped not only by who we are, but by what we choose to look at and represent. The circular format reinforces this sense of return, of thought folding back on itself.

Painted with a gesture that balances freedom and attention, the surfaces resist closure. Colour, contrast and rhythm build open compositions in which meaning remains suspended. These works do not aim to answer who the artist is, but to hold the question for a moment. In the *Plates Series*, reflection is not a conclusion, but a practice, a quiet conversation that continues beyond each piece.



PLATE SERIES

PLATE WITH SELF PORTRAIT AND WHITE CAT

Low-temperature clay pieces are made with the ancient technique of rolling, which allows unique works to be built with free lines. Hand-painted with slip. Finished with shiny glaze on the interior and exterior.

Weight: 2.7 kg

Dimensions: 45 x 10 cm

Diameter: 45 cm

KEPT BY THE ARTIST.



PLATE SERIES

PLATE WITH SELF PORTRAIT AND BLACK CAT

Low-temperature clay pieces are made with the ancient technique of rolling, which allows unique works to be built with free lines. Hand-painted with slip. Finished with shiny glaze on the interior and exterior.

Weight: 2.7 kg

Dimensions: 45 x 10 cm

Diameter: 45 cm

1.100 €



PLATE SERIES

PLATE WITH SELF PORTRAIT WITH CAT

Low-temperature clay pieces are made with the ancient technique of rolling, which allows unique works to be built with free lines. Hand-painted with slip. Finished with shiny glaze on the interior and exterior.

Weight: 0.22 kg

Dimensions: 32 x 2 cm

Diameter: 32 cm

SOLD. PRIVATE COLLECTOR.



PLATE SERIES

PLATE WITH SELF PORTRAIT ON BLUE

Low-temperature clay pieces are made with the ancient technique of rolling, which allows unique works to be built with free lines. Hand-painted with slip. Finished with shiny glaze on the interior and exterior.

Weight: 0.25 kg

Dimensions: 30 x 2 cm

Diameter: 30 cm

SOLD. PRIVATE COLLECTOR.



PLATE SERIES

PLATE WITH ANEMONES IN BLUE VASE

Low-temperature clay pieces are made with the ancient technique of rolling, which allows unique works to be built with free lines. Hand-painted with slip. Finished with shiny glaze on the interior and exterior.

Weight: 0.25 kg

Dimensions: 32 x 2 cm

Diameter: 32 cm

175 €



PLATE SERIES

PLATE WITH APPLES AND PEAR

Low-temperature clay pieces are made with the ancient technique of rolling, which allows unique works to be built with free lines. Hand-painted with slip. Finished with shiny glaze on the interior and exterior.

Weight: 0.25 kg
Dimensions: 30 x 2 cm
Diameter: 30 cm

175 €



PLATE SERIES

PLATE WITH CARNATIONS AND APPLES

Low-temperature clay pieces are made with the ancient technique of rolling, which allows unique works to be built with free lines. Hand-painted with slip. Finished with shiny glaze on the interior and exterior.

Weight: 0.25 kg

Dimensions: 30 x 2 cm

Diameter: 30 cm

SOLD. PRIVATE COLLECTOR.



STILL LIFE BOWLS

An ongoing series that approaches still life as a space of observation. Here, the scene gathers and holds itself lightly. The bowl, itself painted, can be understood as a place where elements come together and perhaps find a provisional order.

The compositions are recognisable without insisting on detail. Fruit, fish, flowers. Everyday elements that evoke domestic gestures and familiar scenes, treated with enough distance for the image to remain open. The aim is not to describe a moment, but to leave it suspended. Attention is placed on composition and balance. Objects do not appear in isolation, but in relation, forming a contained and thoughtful whole. Everything seems to belong to the same scene, as if time had paused slightly before or after an action.

The human figure is absent, yet its trace remains. In the cut fruit, the arranged fish, and the strainer. Minimal signs of an action that has just occurred or has yet to begin. Preparation, waiting, aftermath. Questions that are left open.

Situated between domestic intimacy and a quiet, understated celebration, *Still Life Bowls* aligns with the tradition of still life without naming it. The everyday is not emphasised. It is attended to. Observed. Held.

Rather than closed scenes, these works contain states, simple moments retained with care, where painterly gesture and ceramic form touch and leave space for the gaze.



STILL LIFE BOWLS FRUIT BOWL, APPLES AND PICASSO CERAMICS BOOK

A quiet presence, held in stillness.
Between gaze, colour and closeness.
And something that remains unspoken.

Low-temperature clay pieces are made with the ancient technique of rolling, which allows unique works to be built with free lines. Hand-painted with slip, finished with shiny glaze on the interior and exterior. Lid of the piece finished with gold leaf.

Weight: 4.2 kg
Dimensions: 48 x 25 cm
Diameter: 25 cm

1.100€



STILL LIFE BOWLS

STILL LIFE OF FRUIT BOWL WITH BANANAS

Low-temperature clay pieces are made with the ancient technique of rolling, which allows unique works to be built with free lines. Hand-painted with slip. Finished with shiny glaze on the interior and exterior.

Weight: 3.7 kg

Dimensions: 25 x 28 cm

Diameter: 28 cm

1.500 €



STILL LIFE BOWLS

STILL LIFE OF BOWL WITH POMEGRANATES

Low-temperature clay pieces are made with the ancient technique of rolling, which allows unique works to be built with free lines. Hand-painted with slip. Finished with shiny glaze on the interior and exterior.

Weight: 2.0 kg

Dimensions: 27 x 21 cm

Diameter: 21 cm

SOLD. PRIVATE COLLECTOR.



STILL LIFE BOWLS

STILL LIFE OF BOWL WITH YELLOW LEMONS

Low-temperature clay pieces are made with the ancient technique of rolling, which allows unique works to be built with free lines. Hand-painted with slip. Finished with shiny glaze on the interior and exterior.

Weight: 3.0 kg

Dimensions: 23 x 29 cm

Diameter: 29 cm

1.500 €



STILL LIFE BOWLS

BOWL WITH CUT MELON, PEARS AND BLUE GRAPES

Low-temperature clay pieces are made with the ancient technique of rolling, which allows unique works to be built with free lines. Hand-painted with slip. Finished with shiny glaze on the interior and exterior.

Weight: 3.2 kg

Dimensions: 21 x 31 cm

Diameter: 31 cm

1.500 €



STILL LIFE BOWLS

STILL LIFE OF A BOWL WITH ORANGES

Low-temperature clay pieces are made with the ancient technique of rolling, which allows unique works to be built with free lines. Hand-painted with slip. Finished with shiny glaze on the interior and exterior.

Weight: 3.2 kg

Dimensions: 21 x 31 cm

Diameter: 31 cm

SOLD. PRIVATE COLLECTOR.



STILL LIFE BOWLS

BOWL WITH PEARS, FIGS AND TANGERINES

Low-temperature clay pieces are made with the ancient technique of rolling, which allows unique works to be built with free lines. Hand-painted with slip. Finished with shiny glaze on the interior and exterior.

Weight: 3.5 kg

Dimensions: 28 x 23 cm

Diameter: 23 cm

1.500 €



STILL LIFE BOWLS

BOWL WITH GREEN APPLES AND ORANGE BLOSSOMS

Low-temperature clay pieces are made with the ancient technique of rolling, which allows unique works to be built with free lines. Hand-painted with slip. Finished with shiny glaze on the interior and exterior.

Weight: 1.2 kg

Dimensions: 27 x 20 cm

Diameter: 20 cm

SOLD. PRIVATE COLLECTOR.



STILL LIFE BOWLS

CERAMIC STILL LIFE WITH MULLET

Low-temperature clay pieces are made with the ancient technique of rolling, which allows unique works to be built with free lines. Hand-painted with slip. Finished with shiny glaze on the interior and exterior.

Weight: 3.0 kg

Dimensions: 28 x 23 cm

Diameter: 23 cm

1.500 €



VASES WITH SERIES

An expanding series that neither responds to a clear beginning nor seeks closure. *Vases with...* unfolds as a territory of continuous exploration, where the vase functions both as pictorial surface and as a scene.

Each piece introduces a variation. Flowers, fruit, figures, cats, vases within vases. Backgrounds of intense colour -black, red, yellow, blue- operate not only as chromatic fields, but as possible spaces. Lived, imagined, remembered. The series does not resolve these possibilities, but keeps them in play.

The vase ceases to be merely a container and becomes a three-dimensional plane on which painting occurs. The curved surface demands adaptation and negotiation. Painting here is not only representation, but a dialogue with form. The scene does not sit in front of the viewer; it surrounds them.

Appearances, women, cats, floral elements, compositions within compositions, arrive without explanation. They are presences rather than narratives. If symbolism exists, it does not impose itself. It remains latent, part of a language that repeats and transforms. In *Vases with...*, colour structures space and gesture activates it. Each vase operates as an open exercise, a test, a question formulated in paint and material. There is no hierarchy between background and motif, figure and object. Everything occupies the same plane of attention.

More than images, these works propose situations. Scenes that resist definition, finding in the vase not a limit, but a place from which to remain possible.



VASES WITH SERIES

STILL LIFE OF PEARS, APPLES AND CARNATIONS ON A TURQUOISE BACKGROUND

Low-temperature clay pieces are made with the ancient technique of coiling, which allows unique works to be built with free lines. Hand-painted with slip. Finished with shiny glaze on the interior and exterior.

Weight: 2.0 kg

Dimensions: 30 x 30 cm

Diameter: 30 cm

SOLD. PRIVATE COLLECTOR.



VASES WITH SERIES

VASE WITH FLOWERS ON PINK BACKGROUND

Low-temperature clay pieces are made with the ancient technique of coiling, which allows unique works to be built with free lines. Hand-painted with slip. Finished with shiny glaze on the interior and exterior.

Weight: 1.0 kg

Dimensions: 20 x 23 cm

Diameter: 23 cm

800 €



VASES WITH SERIES **FLOWERS AND FRUIT PLATE ON YELLOW**

Low-temperature clay pieces are made with the ancient technique of coiling, which allows unique works to be built with free lines. Hand-painted with slip. Finished with shiny glaze on the interior and exterior.

Weight: 1.5 kg

Dimensions: 26 x 26 cm

Diameter: 26 cm

SOLD. PRIVATE COLLECTOR.



VASES WITH SERIES **TWO WOMEN IN THE GARDEN**

Low-temperature clay pieces are made with the ancient technique of coiling, which allows unique works to be built with free lines. Hand-painted with slip. Finished with shiny glaze on the interior and exterior.

Weight: 1.5 kg

Dimensions: 26 x 22 cm

Diameter: 22 cm

950 €



VASES WITH SERIES

VASE WITH PAINTED FLOWERS AND A PEAR

Low-temperature clay pieces are made with the ancient technique of coiling, which allows unique works to be built with free lines. Hand-painted with slip. Finished with shiny glaze on the interior and exterior.

Weight: 1.0 kg

Dimensions: 33 x 22 cm

Diameter: 22 cm

1.150 €



VASES WITH SERIES

VASE WITH LILIES ON INTENSE RED BACKGROUND

Low-temperature clay pieces are made with the ancient technique of coiling, which allows unique works to be built with free lines. Hand-painted with slip. Finished with shiny glaze on the interior and exterior.

Weight: 1.8 kg

Dimensions: 35 x 18 cm

Diameter: 18 cm

950 €



VASES WITH SERIES

VASE WITH TWO CATS IN THE GARDEN

Low-temperature clay pieces are made with the ancient technique of coiling, which allows unique works to be built with free lines. Hand-painted with slip. Finished with shiny glaze on the interior and exterior.

Weight: 1.5 kg

Dimensions: 27 x 19 cm

Diameter: 19 cm

SOLD. PRIVATE COLLECTOR.



VASES WITH SERIES

VASE WITH EXUBERANT FLOWERS ON MATTE BLACK

Low-temperature clay pieces are made with the ancient technique of coiling, which allows unique works to be built with free lines. Hand-painted with slip and “sgraffiato” technique. Finished with shiny glaze on the interior and exterior.

Weight: 0.8 kg

Dimensions: 20 x 22 cm

Diameter: 22 cm

SOLD. PRIVATE COLLECTOR.



VASES WITH SERIES

BLACK FLOWERS ON WHITE AND PINK BACKGROUND

Low-temperature clay pieces are made with the ancient technique of coiling, which allows unique works to be built with free lines. Hand-painted with slip and “sgraffiato” technique. Finished with shiny glaze on the interior and exterior.

Weight: 1.2 kg

Dimensions: 21 x 19 cm

Diameter: 19 cm

SOLD. PRIVATE COLLECTOR.



VASES WITH SERIES

VASE WITH VASES ON CORAL BACKGROUND

Low-temperature clay pieces are made with the ancient technique of coiling, which allows unique works to be built with free lines. Hand-painted with slip and “sgraffiato” technique. Finished with shiny glaze on the interior and exterior.

Weight: 1.2 kg

Dimensions: 26 x 20 cm

Diameter: 20 cm

800 €



VASES WITH SERIES

TULIPS AND DAFFODILS ON BLACK BACKGROUND

Low-temperature clay pieces are made with the ancient technique of coiling, which allows unique works to be built with free lines. Hand-painted with slip and “sgraffiato” technique. Finished with shiny glaze on the interior and exterior.

Weight: 2.5 kg

Dimensions: 38 x 23 cm

Diameter: 23 cm

950 €



VASES WITH SERIES

VASE WITH SUNFLOWERS ON YELLOW BACKGROUND

Low-temperature clay pieces are made with the ancient technique of coiling, which allows unique works to be built with free lines. Hand-painted with slip. Finished with shiny glaze on the interior and exterior.

Weight: 2.5 kg

Dimensions: 32 x 26 cm

Diameter: 26 cm

950 €



VASES WITH SERIES

CALLAS AND LILIES ON COBALT BLUE BACKGROUND

Low-temperature clay pieces are made with the ancient technique of coiling, which allows unique works to be built with free lines. Hand-painted with slip. Finished with shiny glaze on the interior and exterior.

Weight: 2.5 kg

Dimensions: 35 x 23 cm

Diameter: 23 cm

SOLD. PRIVATE COLLECTOR.



STILL LIFE VASES

This series can be read as a natural evolution within Maite Morell's practice, a need to expand in scale, technical complexity and expressive capacity. Here, still life opens outward, and the vase becomes an active participant in a broader, denser and more intense scene.

The compositions bring together vases and floral arrangements in dialogue. White flowers, branches, bursts of colour. Elements are placed with apparent spontaneity, yet governed by careful attention to balance and proportion. Nothing feels accidental, even as the freshness of the gesture remains.

Still life becomes more explicit. There are more elements, more layers, greater tension between form, colour and gesture. The question posed by the works expands. It is no longer only about observing an object, but about inhabiting a small universe constructed through paint and matter.

Colour plays a central role. At times dominant, at others supportive, it appears lived-in, almost celebratory, like the physical presence of flowers in a vase: full of life, even as that life has already begun to fade.

Flowers do not eclipse the vase. Both depend on one another. The vase contains, but also exposes itself. The flowers open and overflow, occupying space. Between them, a scene is built that does not seek fixation, but remains active.

In *Still Life Vases*, still life is not presented as restraint, but as expansion, an affirmation of gesture, colour and composition as spaces from which to continue asking, not to conclude.



STILL LIFE VASES

BOOK OF MATISSE AND RED VASE

A Matisse book.

A red vase.

And a small scene in balance.

Low-temperature clay pieces are made with the ancient technique of coiling, which allows unique works to be built with free lines. Hand-painted with slip. Finished with shiny glaze on the interior and exterior.

Weight: 3.5 kg

Dimensions: 25 x 19 x 31 cm

1.700 €



STILL LIFE VASES

GREEN VASE AND YELLOW PEAR

A yellow pear.

A green vase.

And a quiet way of holding light.

Low-temperature clay pieces are made with the ancient technique of coiling, which allows unique works to be built with free lines. Hand-painted with slip. Finished with shiny glaze on the interior and exterior.

Weight: 1.7 kg

Dimensions: 27 x 25 cm

1.300 €



STILL LIFE VASES

STILL LIFE OF BLUE VASE AND WHITE FLOWERS

Low-temperature clay pieces are made with the ancient technique of coiling, which allows unique works to be built with free lines. Hand-painted with slip. Finished with shiny glaze on the interior and exterior.

Weight: 4.5 kg

Dimensions: 40 x 23 cm

Diameter: 23 cm

1.700 €



STILL LIFE VASES

STILL LIFE OF VASE WITH BOUQUET OF WHITE FLOWERS

Low-temperature clay pieces are made with the ancient technique of coiling, which allows unique works to be built with free lines. Hand-painted with slip. Finished with shiny glaze on the interior and exterior.

Weight: 3.0 kg

Dimensions: 32 x 30 cm

Diameter: 30 cm

1.700 €



STILL LIFE VASES

VASE WITH WHITE FLOWERS AND GREEN APPLE

Low-temperature clay pieces are made with the ancient technique of coiling, which allows unique works to be built with free lines. Hand-painted with slip. Finished with shiny glaze on the interior and exterior.

Weight: 2.1 kg

Dimensions: 33 x 20 cm

Diameter: 20 cm

1.600 €



STILL LIFE VASES

VASE WITH BRANCH WITH COLORFUL FLOWERS

Low-temperature clay pieces are made with the ancient technique of coiling, which allows unique works to be built with free lines. Hand-painted with slip. Finished with shiny glaze on the interior and exterior.

Weight: 4.0 kg

Dimensions: 37 x 24 cm

Diameter: 24 cm

SOLD. PRIVATE COLLECTOR.



STILL LIFE VASES

STILL LIFE OF CHINESE VASE WITH LOQUAT BRANCHES

Low-temperature clay pieces are made with the ancient technique of coiling, which allows unique works to be built with free lines. Hand-painted with slip. Finished with shiny glaze on the interior and exterior.

Weight: 5.0 kg

Dimensions: 50 x 25 cm

Diameter: 25 cm

KEPT BY THE ARTIST.



STILL LIFE PLATES

This series functions as a parallel axis within Maite Morell's work, a more concentrated space where still life gathers and appears as an instant held in suspension. The plate and in some cases, the tray, becomes a flat, almost pictorial surface on which the scene is arranged with contained proximity.

The elements are recognisable: figs, pomegranates, fish, lemons, garlic and flowers. Motifs linked to Mediterranean culture, the table and the market, to everyday gestures that feel familiar. Yet the scenes are not anchored in a specific time. They may refer to something already shared or something yet to come, memory or anticipation.

Human presence is not shown, but implied. In the resting knife, the half lemon and the way objects are placed. Minimal signs suggesting a before or an after, without fixing the action. The format reinforces this intimacy. The image is presented frontally, contained within a clear boundary. There is no pursuit of depth or narrative. Everything takes place on the surface, where painting and ceramics meet and support one another.

In *Still Life Plates*, still life is not a closed scene, but a state, a fragment of the everyday held with care, suspended between memory and desire.



STILL LIFE PLATES

PLATE OF CARNATIONS AND TWO QUINCES

A small field of warmth.
A scene held between the table and the garden.
And something quietly remembered.

Low-temperature clay pieces are made with the ancient technique of rolling, which allows unique works to be built with free lines. Hand-painted with slip. Finished with shiny glaze on the interior and exterior.

Weight: 1.5 kg
Dimensions: 27 x 19 cm
Diameter: 19 cm

KEPT BY THE ARTIST.



STILL LIFE PLATES

PLATE OF FISH, PRAWNS AND LEMON

A plate as a small field of light.
A scene close to the hand.
And close, too, to memory.

Low-temperature clay pieces are made with the ancient technique of rolling, which allows unique works to be built with free lines. Hand-painted with slip. Finished with shiny glaze on the interior and exterior.

Weight: 1.1 kg
Dimensions: 31 x 5 cm
Diameter: 31 cm

1.350 €



STILL LIFE PLATES

PLATE OF WATERMELON AND FORK

A small summer pause.
Colour resting on the table.
And a gesture left open.

Low-temperature clay pieces are made with the ancient technique of rolling, which allows unique works to be built with free lines. Hand-painted with slip. Finished with shiny glaze on the interior and exterior.

Weight: 1.1 kg
Dimensions: 31 x 5 cm
Diameter: 31 cm

1.350 €



STILL LIFE PLATES

STILL LIFE OF PLATE WITH POMEGRANATE AND KNIFE

Low-temperature clay pieces are made with the ancient technique of rolling, which allows unique works to be built with free lines. Hand-painted with slip. Finished with shiny glaze on the interior and exterior.

Weight: 1.0 kg

Dimensions: 19 x 32 cm

Diameter: 32 cm

SOLD. PRIVATE COLLECTOR.



STILL LIFE PLATES

STILL LIFE OF PLATE WITH FIGS

Low-temperature clay pieces are made with the ancient technique of rolling, which allows unique works to be built with free lines. Hand-painted with slip. Finished with shiny glaze on the interior and exterior.

Weight: 1.1 kg

Dimensions: 15 x 28 cm

Diameter: 28 cm

SOLD. PRIVATE COLLECTOR.



STILL LIFE PLATES

TRAY OF FOUR QUINCES AND KNIFE

A still life held in pause.
A quiet balance of fruit and gesture.
And something of the table, remembered.

Low-temperature clay pieces are made with the ancient technique of rolling, which allows unique works to be built with free lines. Hand-painted with slip. Finished with shiny glaze on the interior and exterior.

Weight: 3.1 kg
Dimensions: 43 x 33 x 16 cm

1.600 €



STILL LIFE PLATES

SEA BASS, CUTTLEFISH, CHILI AND HEAD OF GARLIC

Low-temperature clay pieces are made with the ancient technique of rolling, which allows unique works to be built with free lines. Hand-painted with slip. Finished with shiny glaze on the interior and exterior.

Weight: 1.2 kg

Dimensions: 37 x 27 cm

Diameter: 22 cm

1.600 €



STILL LIFE PLATES

TRAY WITH SEA BREAM, LEEKS AND HALF A LEMON

Low-temperature clay pieces are made with the ancient technique of rolling, which allows unique works to be built with free lines. Hand-painted with slip. Finished with shiny glaze on the interior and exterior.

Weight: 2.5 kg

Dimensions: 40 x 27 cm

Diameter: 27 cm

1.600 €



STILL LIFE PLATES

STILL LIFE OF PLATE WITH SARDINES AND HALF A LEMON

Low-temperature clay pieces are made with the ancient technique of rolling, which allows unique works to be built with free lines. Hand-painted with slip. Finished with shiny glaze on the interior and exterior.

Weight: 2.1 kg

Dimensions: 28 x 27 cm

Diameter: 28 cm

SOLD. PRIVATE COLLECTOR.



STILL LIFE PLATES

STILL LIFE OF SARDINES ON A TRAY WITH RED FLOWERS

Low-temperature clay pieces are made with the ancient technique of rolling, which allows unique works to be built with free lines. Hand-painted with slip. Finished with shiny glaze on the interior and exterior.

Weight: 2.1 kg

Dimensions: 38 x 27 x 22 cm

1.600 €



CATS & SELF PORTRAITS

This grouping brings together three sculptures: two cats and a self-portrait. They are not presented as a closed series, but as a small constellation of presences sharing the same field of attention. Their relationship is not fully defined and does not need to be.

The self-portrait emerges from a direct, contained position. Not as an image seeking description, but as a way of being. The sculpture does not appear made to be observed from outside, but to hold something lived and inhabited. There is presence rather than representation.

The cats occupy that same plane. They are not secondary figures, but presences with their own intensity. Their stillness and proximity generate a shared atmosphere of silence and concentration. They share with the self-portrait a reflective, inward quality.

Objects, the necklace, the pear, the card, carry weight. They recur within Morell's iconography and appear here without explanation. They are not symbols to decode, but forms that accompany and persist. Their repetition does not clarify meaning; it sustains it.

Despite the material presence of the works, the tone remains intimate. Scale, gesture and the relationship between body and object invite a close, almost interior reading. The sculptures do not assert; they hold.

In Cats and Self-Portrait, the work does not seek closure. It allows itself to be looked at closely, as if each piece were keeping something in reserve, not fully revealed, yet unmistakably present.



CATS & SELF PORTRAITS

PETER THE MAGICIAN. CAT SCULPTURE

Ceramic sculpture modeled by hand and made with low-temperature clay. Hand-painted, scribbled, and polished, without molds. The final finish is a glossy glaze and gold leaf. Tarot card, modeled and hand-painted with engobes, a ceramic pencil, and gold leaf.

Weight: 3.9 kg

Dimensions: 46 x 33 x 21 cm

Dimensions tarot card: 14,5 x 8,5 cm

SOLD. PRIVATE COLLECTOR.



CATS & SELF PORTRAITS

CAT SCULPTURE WITH PEAR

Ceramic sculpture modeled by hand and made with low-temperature clay. Hand-painted, scribed, and polished, without molds.

Weight: 3.8 kg

Dimensions: 43 x 35 cm

Diameter: 24 cm

1.600 €



CATS & SELF PORTRAITS

SELF PORTRAIT SCULPTURE WITH NECKLACE

Low-temperature clay sculpture modelled and emptied by hand. Glossy white enamel finish.

Weight: 4.5 kg

Dimensions: 36 x 18 cm

Diameter: 17 cm

KEPT BY THE ARTIST.